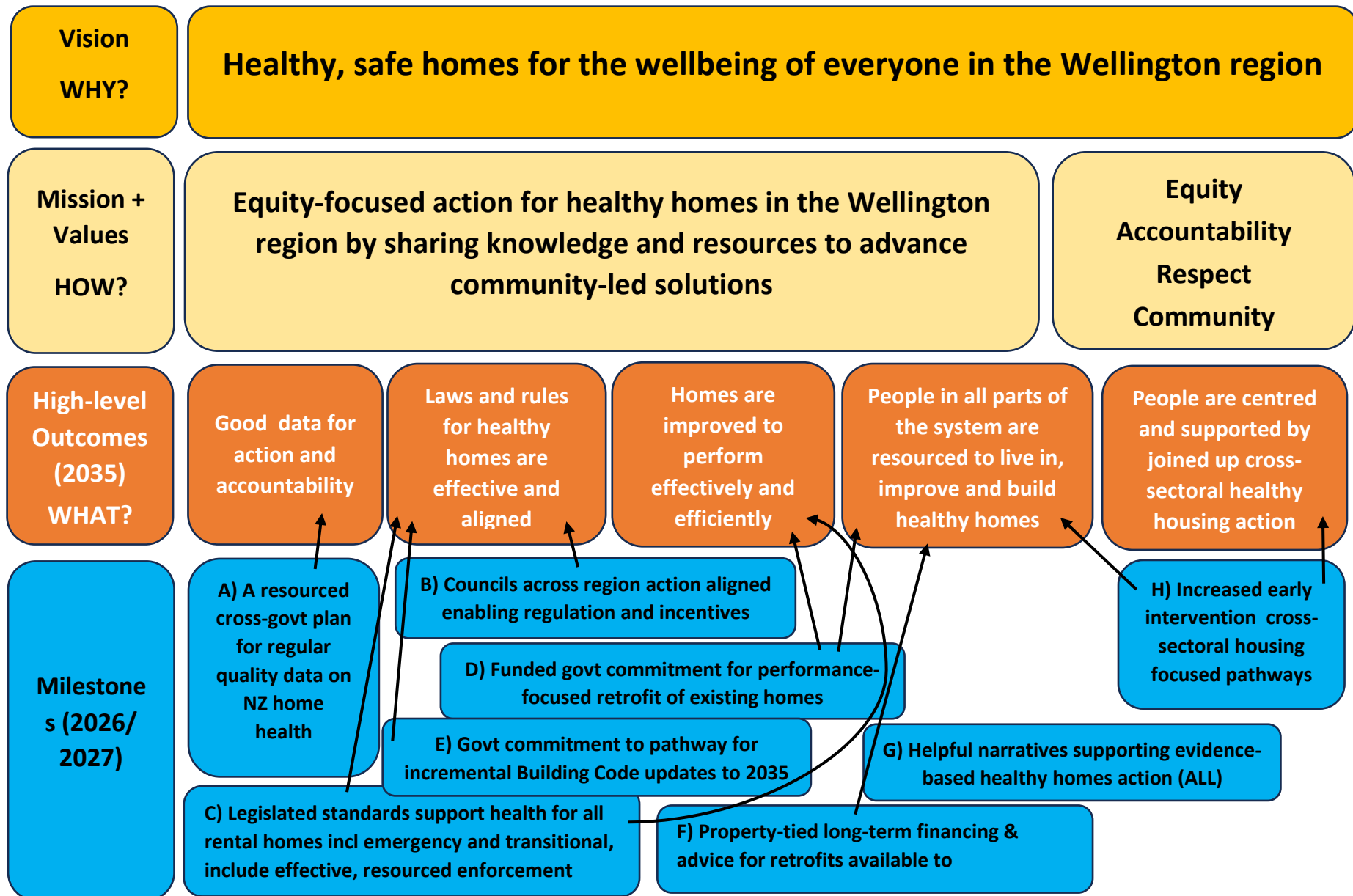


Wellington Regional Healthy Homes Group 'Strategy on a Page' (20 Jul 2023)



## WRHHG Strategy – 3-page version

### Vision (WHY)

### Mission (HOW)

### Values (HOW):

**Equity:** we are committed to te Tiriti o Waitangi and to ensuring that all people have equitable opportunity to live in a healthy home. We will actively address existing inequities as a priority in our work (rainbow, disability, gender, different household types)

**Accountability:** accountable to the people who need the change and to each other, enabled by trust, collaboration and integrity in the work each organisation does.

**Respect:** to the people who need the change, to each other, our environment, and tangata whenua

**Community:** we come together as a community to do work that is driven by the communities who need the change, enabled by collaboration and inclusivity.

### High-level Outcomes (WHAT – by 2035):

**Good data for action and accountability:** Appropriate, sufficient and robust data is consistently gathered, analysed and shared to inform action, and ensure accountability at national, regional and local levels.

**Laws and rules for healthy homes are effective and aligned:** Legislation and regulation achieve healthy performance for new and existing homes by being coherent, and resourced for effective implementation and ongoing evaluation

**Homes are improved to perform effectively and efficiently:** Existing homes are improved to perform effectively and efficiently

**People in all parts of the system are resourced to live in, improve and build healthy homes:** Good information, advice, training, financing available so homeowners, builders, regulators have the knowledge and capabilities to meet and enforce standards

**People are centred and supported by joined up cross-sectoral healthy housing action:** Early, evidence-based, person-centred, cross-sectoral action for individuals and whānau presenting as vulnerable to housing-sensitive ill-health

**Milestones (WHAT – next 3-4 years):**

	<b>Milestones</b>	<b>WG</b>	<b>Example Action Areas</b>
<b>A</b>	<b>A resourced cross-govt plan for regular representative data on NZ home health</b>	Good Data	<ul style="list-style-type: none"> <li>• Work closely with BRANZ to realise ‘Future of National Housing Surveys’ Project goal</li> <li>• Support to Lower Hutt Housing &amp; Homelessness Network data project?</li> </ul>
<b>B</b>	<b>Councils across Wellington region action a suite of aligned enabling regulation and incentives</b>	Council Action	<ul style="list-style-type: none"> <li>• Cross-council communication (sharing information about what has been done and how)</li> <li>• Increase councils uptake of measures including: Homefit &amp; Homestar on LIMs; EDA/HPA support available for residents in all territorial authorities; adopting (Renter’s United) Healthy Home Commitment; Using Health Act to enforce healthy homes; VTRs (once enabled - link to CCCFA change advocacy); development incentives for affordable, healthy and low-carbon housing; inclusive zoning; 3 healthy homes measures proposed to WRLC taken up.</li> <li>• Joined up councils voice on central govt action needed to enable healthy homes in all TAs</li> </ul>
<b>C</b>	<b>Legislated standards support health for all rental homes including emergency and transitional housing, and include effective, resourced enforcement</b>	Legislation & Standards	<ul style="list-style-type: none"> <li>• WRHHG identify key agreed elements of ‘healthy home performance’ that we can collectively get behind: target performance results 2035</li> <li>• HHS is performance-based, and exclusions are eliminated. Transitional Housing Code of Practice requires equivalent standard to HHS, and Emergency Housing is subject to equivalent mandated minimum standards. HHS, Transitional Housing Code of Practice and Emergency Housing mandated minimum standards are resourced for proactive independent government-led (not tenant-dependent) monitoring and enforcement.</li> <li>• Property Manager legislation that is strong and includes landlords who manage their own property. Independent, government-led enforcement of legislation is resourced.</li> </ul>
<b>D</b>	<b>Performance-focused retrofit of all existing homes established as a long-term government goal, reflected in aligned funding and legislative measures.</b>	Early Action and equity/inclusion	<ul style="list-style-type: none"> <li>• EECA WKH-funded interventions aligned with target performance results 2035</li> <li>• Homes We Deserve deep retrofit campaign (NZGBC led)</li> <li>• Property-tied long-term financing backed by local and/or central government for retrofits (via VTRs or other)</li> </ul>

<b>E</b>	<b>Pathway for incremental Building Code updates mapped by government, for alignment with BfCC and bringing NZ to or beyond international standards by 2035</b>	Legislation and Standards	<ul style="list-style-type: none"> <li>• WRHHG identify key agreed elements of ‘healthy home performance’ that we can collectively get behind: target performance results 2035</li> <li>• Consistent messaging in member communication with MBIE</li> <li>• Proactive engagement ahead of next NZBC review</li> <li>• Plan to mobilise broad networks for consistent messaging in submissions to consultation processes</li> </ul>
<b>F</b>	<b>Property-tied long-term financing, and free consistent advice for health &amp; sustainability retrofits available to homeowners</b>	Council Action + Legislation & Standards	<ul style="list-style-type: none"> <li>• CCCFA change to enable council VTRs</li> <li>• Council VTR schemes available throughout region for health and sustainability retrofits</li> <li>• EDA/HPA advisor support available to homeowners and renters free of charge across all Wellington region territorial authorities</li> <li>• Consistent renovation/retrofit guidance available across member web- and paper-based information (BRANZ Renovate website, Superhomes Renovation Guide, Tuanui DIY videos, Habitat website etc)</li> </ul>
<b>G</b>	<b>Helpful narratives supporting evidence-based healthy homes action amplified in political and public discourse</b>	Mindset change	<ul style="list-style-type: none"> <li>• Narrative Comms Action Research Project</li> <li>• High-level messages and other comms elements integrated in wrhhg and member websites and social media, submissions etc.</li> </ul>
<b>H</b>	<b>Early intervention housing focused pathways for housing-sensitive health</b>	Early Action and equity/inclusion	<ul style="list-style-type: none"> <li>• Tuanui Programme</li> <li>• WRHHG assessment of ‘high leverage’ action areas to prioritise focus<sup>1</sup></li> <li>• Equity/Inclusion audit of WRHHG Strategy &amp; Action Plan?</li> </ul>

<sup>1</sup> involve Tuanui and WellHomes partnerships, Lower Hutt Housing and Homelessness Network, Renters United, Te Whatu Ora, Habitat, EDA network, Councils, Toast, ERANZ?, ...